

The logo for osync 4 is centered on a green background with a faint network pattern. It features the text 'osync 4' in a bold, sans-serif font. The 'o' is a large, 3D-style letter with a green center and a white outer ring. The 'sync' is in white with a slight shadow, and the '4' is also white and 3D. A small registered trademark symbol (®) is located to the right of the 'c' in 'sync'.

**osync<sup>4</sup>**

Real-Time Performance Solutions

# INTRODUCING OSYNC 4

Get the information you need, when and where you need it, to keep your business up and running smoothly.

- Reduce downtime and gain peace of mind.
- Diagnose and repair issues up to 5x faster.
- Easily stay on top of maintenance tasks.
- Fix minor issues in a shorter time at lower cost.
- Access real-time data 24/7 across all your devices.



# NOTIFICATIONS

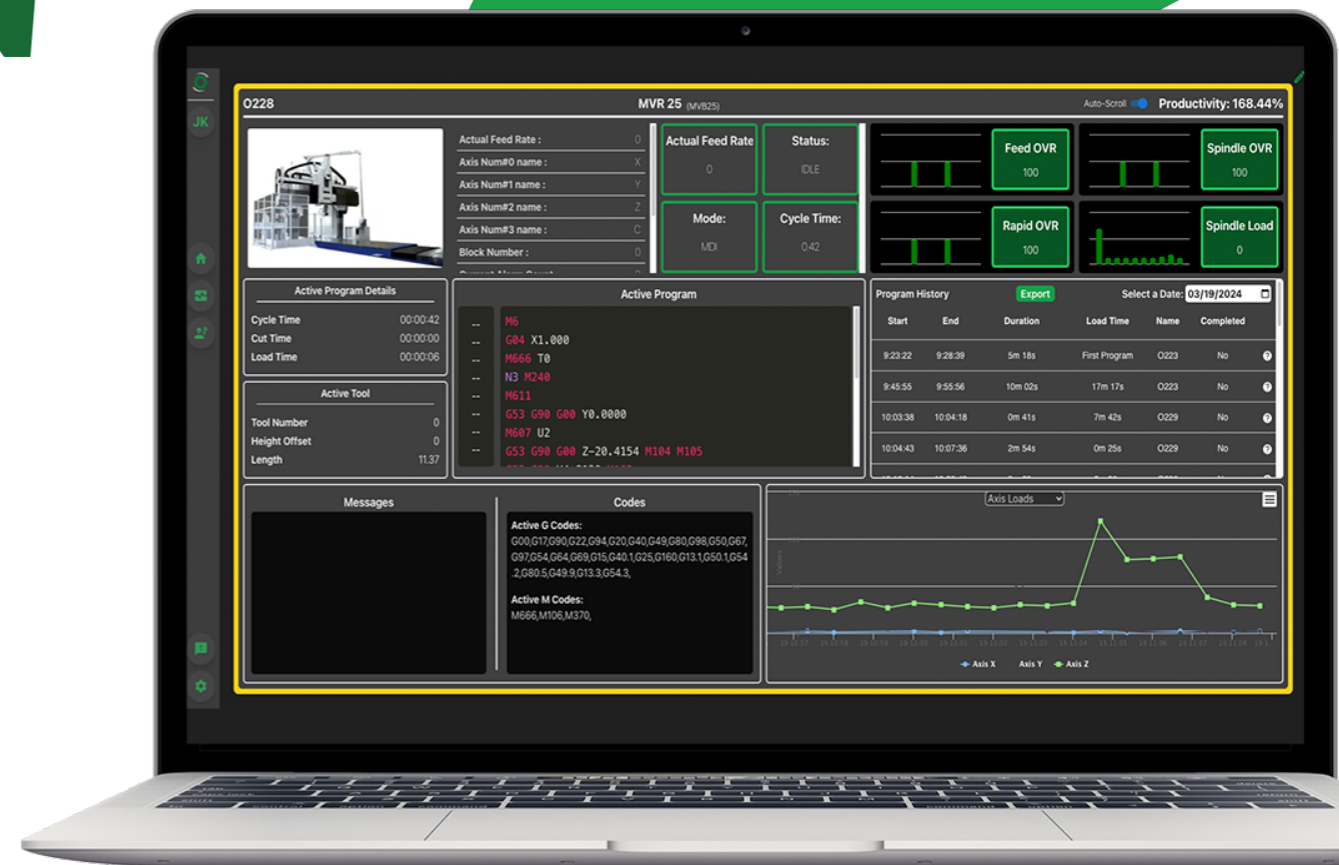
- Based on historical machine usage data, you get timely notifications when to perform routine maintenance.
- Catch minor issues early that could grow into major machinery failure and high repair costs.



# SECURE CLOUD-BASED\* ENCRYPTION

Be confident with our secure cloud-based encryption that protects and stores your important data.

- Get daily, weekly, and monthly reports.
- Store years of valuable machine data.
- Monitor machine on/off times.
- Track cycle counts.
- Connect and monitor multiple machines and 3rd party auxiliary equipment.
- Access live data from all your devices from anywhere in the world
- Receive timely over-the-air\* updates.



\*Requires an Internet connection. Please contact our parts team to learn more.



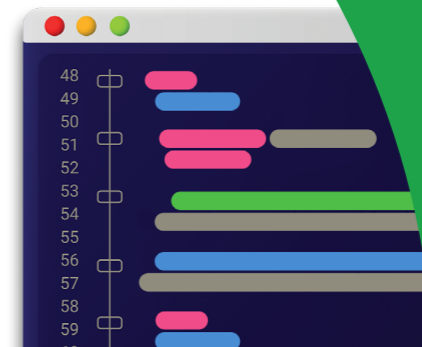
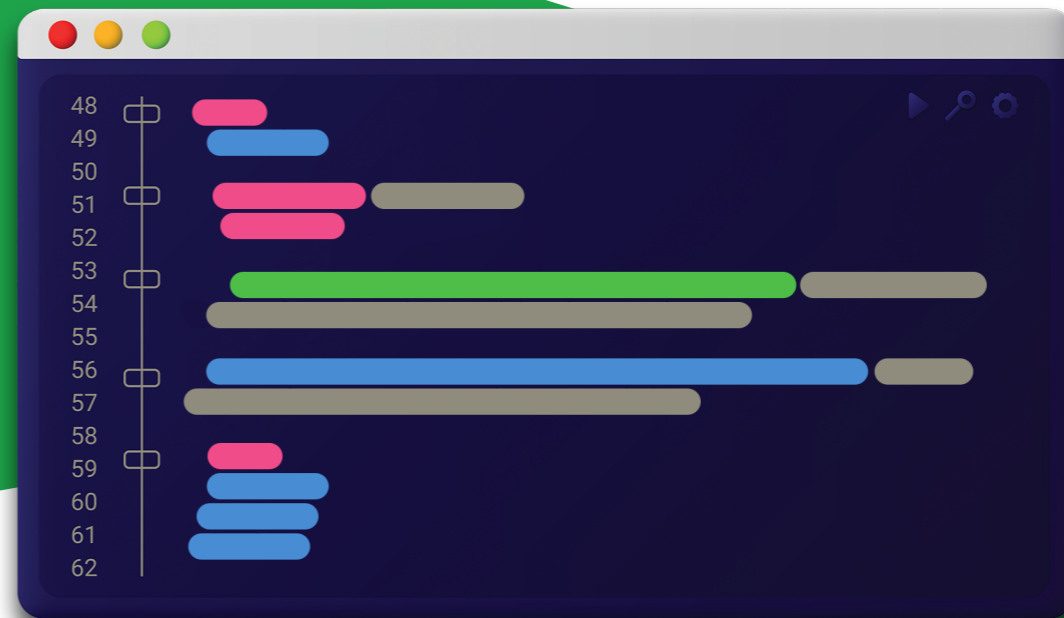
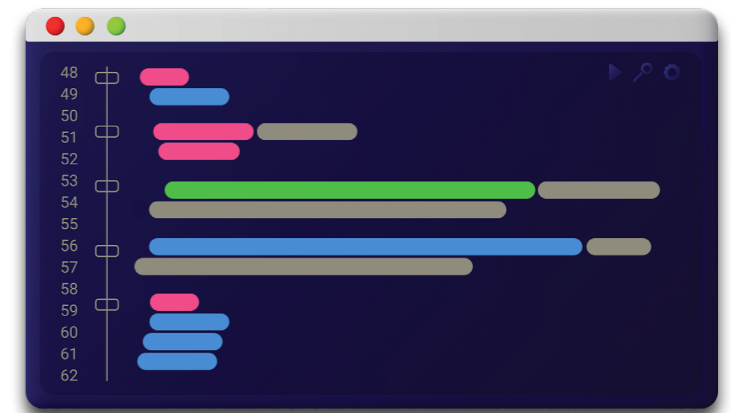
# INCREASE **EFFICIENCY**

Easily monitor and collect data to increase your efficiency and profits.

- Securely monitor and adjust the operations of all your compatible machinery and auxiliary equipment.
- Optimize your productivity and maximize your investment.
- Collect accurate data straight from your machine.
- Compare cycle times and identify areas where you can improve throughput.

# EXPANDABLE

- Track only the data important to you and your business goals.
- With over-the-air updates, it is easy to add modules that are right for you.
- New modules are currently under development.
- Additional modules are planned for future release.



Contact our parts team  
today to get Osync 4.

[parts@cronsrud.com](mailto:parts@cronsrud.com) | (704) 508-7000



[parts@cronsrud.com](mailto:parts@cronsrud.com) | (704) 508-7000